



# Chip PC Thin Clients Customized to Reflect Corporate Identity

## Application Note AN-114

19 January 2004

Version 1.1

## 1 General

Chip PC has long been dedicated to provide customers with customizable solutions, providing thin clients that are built-to-order, where customers get exactly and only what they want.

Through software plug-ins (XPIs), Chip PC thin clients offer flexibility during product life cycle and tailored solutions according to customer changing needs.

Since Chip PC is aware of the importance of corporate identity as reflected by a company's computing resources, Chip PC has begun implementing corporate logo and colors in special projects offered to large enterprises and customers. Chip PC thin clients can be customized to reflect Corporate Identity in both the hardware and the software of Chip PC thin clients.

## 2 Hardware: Corporate Logo Imprinted on the Thin Client Device

Chip PC enables the customer to print corporate logo on the plastic of the device and choose device color according to corporate colors.

These options are of course pending on Chip PC prior approval and minimum order quantities. However, Chip PC advanced production lines are pre-arranged to receive such orders, including customer-specific graphics and software configurations.



## 3 Software: Corporate Logo Reflected in System Screens

Chip PC enables the customer to display Corporate-Logo on device's software by using the "**Customized System Screens**" Plug-In.

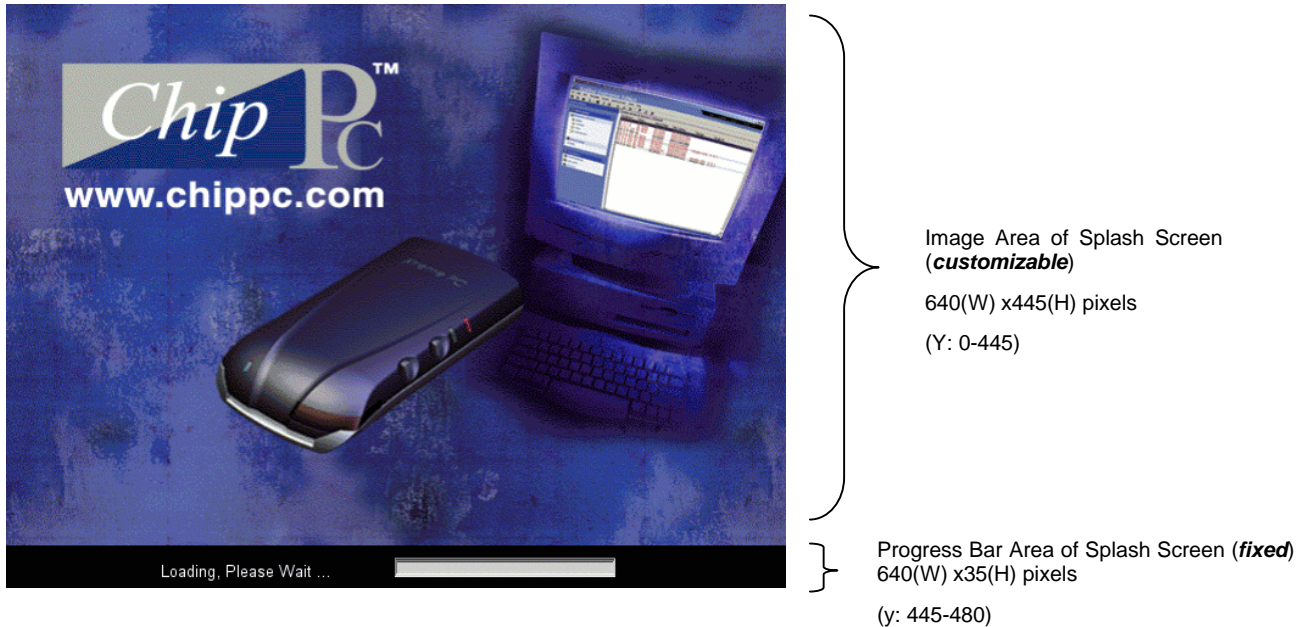
This Plug In offers the control of Splash Screen - presented at device boot - and Screen Saver images.

An administrator can replace the default Splash Screen picture (displayed during device boot) and Screen Saver picture by deploying pictures with organizational logo to the **Xtreme PC** thin client devices.

This option can be implemented by any organization; however it is especially useful when implemented on thin client devices that are situated in public locations such as public service departments.

(To learn more about the Customized System Screens Plug-In see <http://www.chippc.com/products/plugins/details.asp?XPIID=1>).

## I. Splash Screen Image Requirements



The figure above displays the Chip PC Default Splash Screen provided with every **Xtreme PC** thin client.

The Image Area is open to changes according to the following graphic design guidelines:

- Splash Screen Size: 640x480 pixels
  - Customizable area:** The Image size: 640(W) x445(H) pixels (y: 0-445),
  - Fixed area:** The Progress bar 640(W)x35(H) pixels (y: 445-480)
- Graphic Format: Windows Bitmap (\*.bmp)
- No. of Colors: 256
- The color of the upper left pixel (x=0; y=0) will set the color of the progress bar. By default it is: R= 43; G=62; B=167.

See below some examples to Customized Splash Screen Images:



## II. Screen Saver Image Requirements



The figure above displays the Chip PC Default Screen Saver provided with every **Xtreme PC** thin client.

The Screen Saver Image is open to changes according to the following graphic design guidelines:

- Screen Saver Size: the default screen saver size is 410x72 pixels, however any size can be used according to the graphics and text the organization wishes to include.
- Graphic Format: Windows Bitmap (\*.bmp)
- No. of Colors: 256

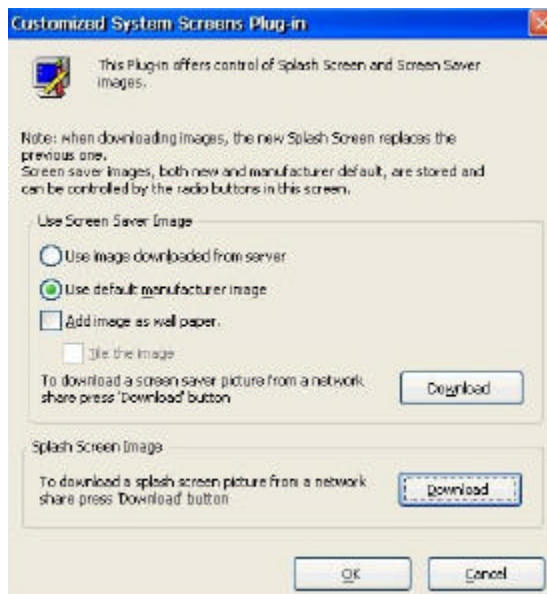
See below some examples to Customized Screen Saver Images:



## III. How to use the Customized System Screens' Plug-In?

In order to replace the default System Screens of **Xtreme PC** thin clients, access either locally or remotely the **Customized System Screens** Plug In and press the **configure** button.

The following window will be displayed:



### 1. To change the Screen Saver Image:

- In the **Use Screen Saver Image** frame, the default option marked is the **Use default manufacturer image** Radio Button. Choose the **Use image downloaded from server** Radio Button.
- Check the **Add image as wall paper** box if you wish this option to be used.
- Press the **Download** button and you will be prompted by a window asking you to specify the network path where you beforehand stored the Screen Saver Image prepared according to the guidelines specified in section II Screen Saver Image Requirements above. You might be prompted with a User Login window requiring you to specify User Credentials in order to access the Network Share where the file is stored.

### 2. To change the Splash Screen Image:

- In the **Splash Screen Image** frame, press the **Download** button and you will be prompted by a window asking you to specify the network path where you beforehand stored the Splash Screen Image prepared according to the guidelines specified in section I Splash Screen Image Requirements above. You might be prompted with a User Login window requiring you to specify User Credentials in order to access the Network Share where the file is stored.

3. After Pressing the **OK** button, the thin client device will reboot and the new system screens will be displayed.

*2004 Chip PC Inc., Chip PC (Israel) Ltd. All rights reserved.*

*The information contained in this document represents the current view of Chip PC on the issues discussed as of the date of publication. Because Chip PC must respond to changing market conditions, it should not be interpreted to be a commitment on the part of Chip PC, and Chip PC cannot guarantee the accuracy of any information presented after the date of publication.*

*This Application Note is for informational purposes only. CHIPPC MAKES NO WARRANTIES, EXPRESS OR IMPLIED, IN THIS DOCUMENT.*

*Xcalibur, Chip PC and the Chip PC logo are either trademarks or registered trademarks of Chip PC.*

*Products mentioned in this document may be registered trademarks or trademarks of their respective owners.*